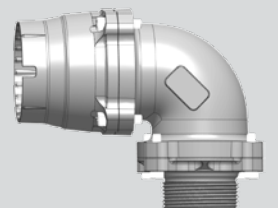
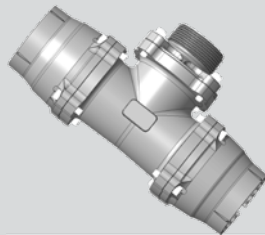
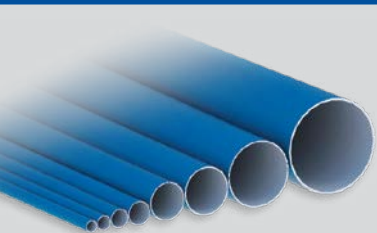


SimplAir[®] EPL

20-158 mm Easy Fit Piping System



Compressed Air Distribution

Are you spending too much to transport air ?

The total expense of distributing air from your compressors to its point of use involves more than just the cost of piping. It also includes labor-intensive installation (typically 5 times as much as the material costs), wasted energy from leakprone systems (upto 20% to 30% after 10 years from start up), and increased energy consumption to compensate for pressure drops (7% for every 1 barg drop).

In addition, with subsequent repairs or system upgrades costing 4 times as much as the material costs installation, it is easy to see how such hidden expenses can negatively impact your total cost of ownership.

Choosing the right air distribution system will lower your operating costs.

Traditional¹ piping costs more...



1- Traditional piping systems: black pipe, galvanized steel.

The Easy, Fast Way to Better Connections

The SimplAir® Easy Pipe Line (EPL) quick-fit piping system is designed for efficient distribution of compressed air and other inert gases and vacuum systems. It provides fast and easy installation, improved performance and effortless maintenance.

Minimise Your Downtime

Easy Pipe Line features light aluminium pipe coupled with a large range of available fittings and accessories for fast and easy connections to any type of pneumatic equipment. It does so with minimal pressure drop, without the risk of contaminating the compressed air with rust particles and without the need for any maintenance.

EPL Versus Traditional Pipe

- The unique shape of the Polymer & Aluminum fittings (Ø 20 to Ø 158 mm), combined with the smooth surface of the pipe, provides full air flow capacity without restrictions or turbulence.
- Pressure drop through the system is dramatically reduced compared to traditional piping materials, such as galvanized or carbon steel.
- System life is designed to be longer than with traditional materials.
- 10 years warranty for piping and fittings
- Air leakage is completely eliminated, resulting significant energy savings.
- A simple, **patented locking** and tightening system installation in a safe and fully-intuitive manner.
- Regarding installation time and labour costs, we have a reduction of 40% comparing to conventional piping.



SimplAir® EPL: simple to install

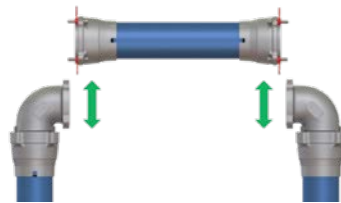


With a modular design and easy-to-assemble components, the SimplAir® EPL piping system empowers you to easily plan and adapt your distribution piping network to the needs of your production environment.

Intuitive, easy to assemble. No special tools or qualified personnel are required to assemble leak-free SimplAir® EPL systems.

Seamless maintenance.

Patented innovative fitting design simplifies piping system assembly and disassembly, minimizing downtime.



Tailored to your needs. An extensive variety of connectors, including those specifically developed for all compressor and dryers ensure easy transition from current or competitive piping systems.

Standardized pipe length.

Pipes are supplied in 6 m lengths, as per Industry requirement.

Versatile configuration. A wide variety of components and accessories combined with ease-of-assembly enables swift implementation with minimal downtime.

Preassembled productivity. Fully preassembled, ready-to-use fittings reduce installation time and number of components to order and stock.

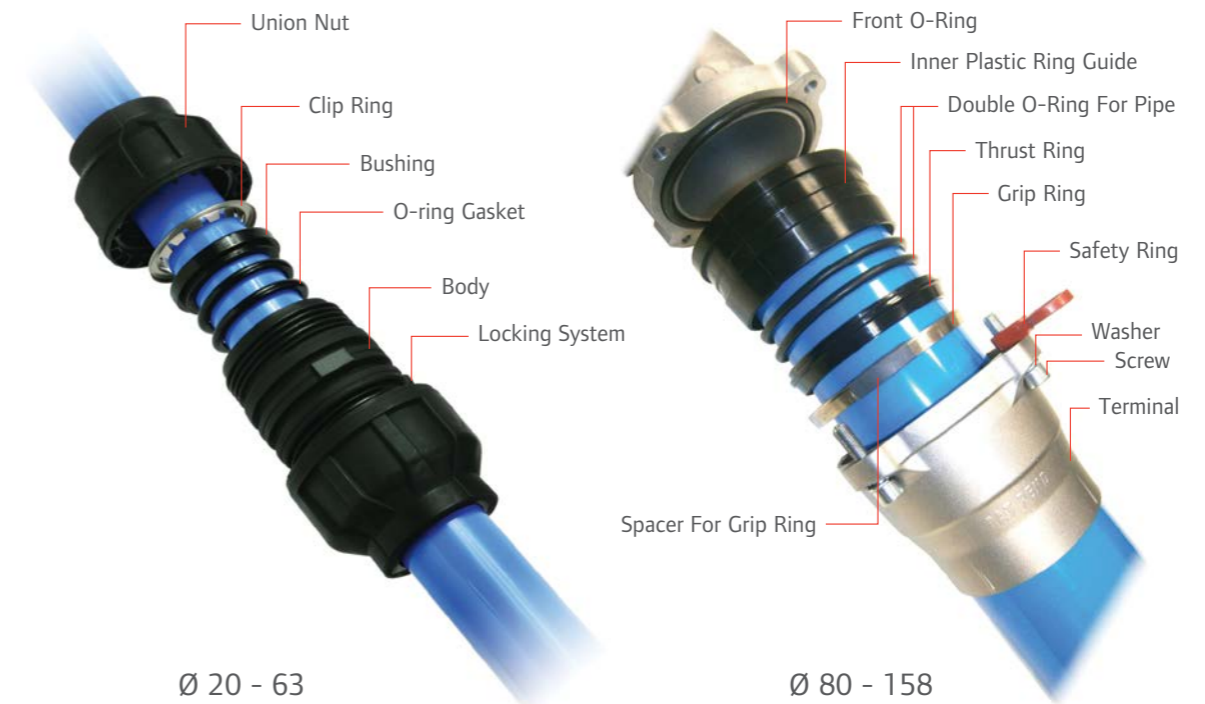
Reconfigurable. Reusable connectors minimize incremental expenses when adapting or expanding existing piping to changing requirements.

Computer-aided design. The advanced SimplAir® EPL software tool makes it easier to develop and create your ideal leak-free air distribution system.

Personal support. Dedicated expert team will ensure your questions are addressed before, during and after the system is installed.

Reliability for Any Configuration

The Easy Pipe Line aluminium pipe is resistant to corrosion and vibration and features unique interlocking components to easily configure your compressed air system.



Aluminium Pipe Makes the Difference

A high-quality finish ensures maximum resistance to corrosion, aggressive agents and UV rays.

Maximum Performance Under All Conditions

The Easy Pipe Line system comply with PED, ASME, CRN directives and maintains its optimal characteristics in terms of safety and performance, even at the maximum rated value.

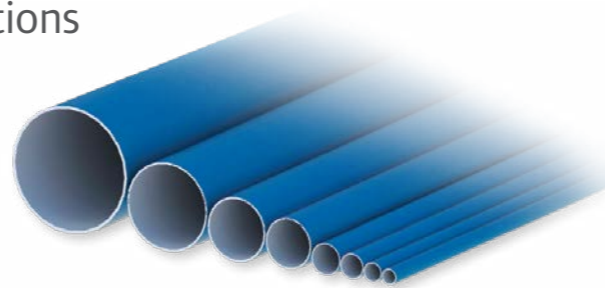
Simple, Speedy Connections

The special design of the locking components allows easy dismantling of the system even for 80-158 diameters where you can insert and remove the pipe in the radial way.

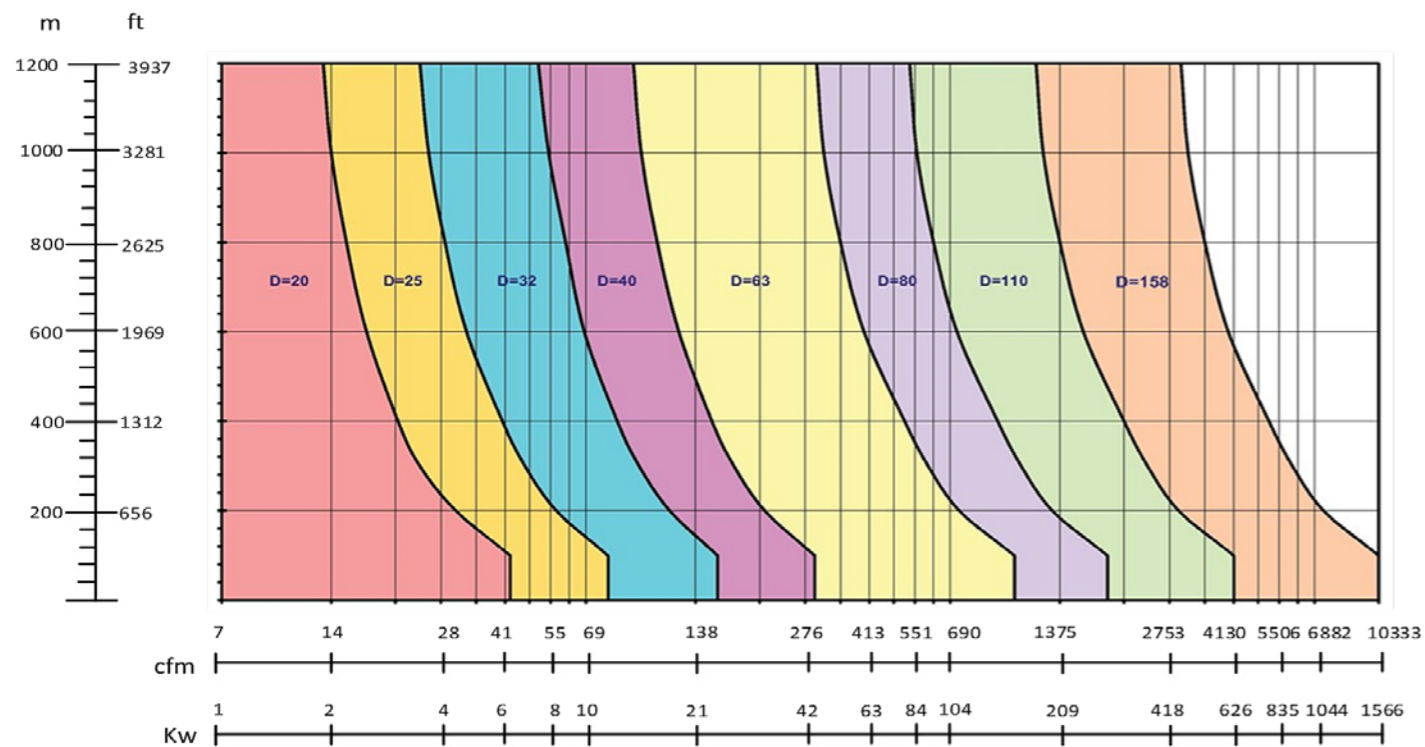


Wide Range of Sizes to Meet Your Needs

The seamless extruded aluminium pipe, which is supplied with dimensional specifications according to global standards, is available in 20 mm, 25 mm, 32 mm, 40 mm, 63 mm, 80 mm, 110 mm and 158 mm diameters.



Choosing The Right Diameter Pipe For Open Systems (Flow decreases 2 x for closed ones)



For reference only. Assumes 6.9 barg/100 psig closed loop system.

As illustrated in the sizing chart above, with multiple pipe diameters, Easy Pipe Line can accommodate a broad range of system flows while maintaining a pressure drop of less than 5%.

Safety at the core of our design

With precision tolerances and the highest quality materials and finishes, the SimplAir® EPL system delivers leak-free, corrosion-resistant performance for a variety of industrial applications.



SPECIFICATIONS

SIZE [mm]	20, 25, 32, 40, 63	80, 110, 158
Max working pressure	14 bar	14 bar 12 bar for 158 mm
Max working temperature	-10° C to 60° C	-10° C to 60° C
Pipe material	aluminium EN AW-6060 extruded and calibrated; T6 tempered UV radiation resistant – suitable to indoor/outdoor use	
Paint certification	Qualicoat® powder paint (flame retardant)	
Pipe weight	20 mm 0.23 kg/m 25 mm 0.30 kg/m 32 mm 0.39 kg/m 40 mm 0.49 kg/m 63 mm 1.03 kg/m	80 mm 1.58 kg/m 110 mm 2.37 kg/m 158 mm 4.70 kg/m
Fitting material	engineered polymer Ultradid® B3EG6	aluminium EN AB 42100/44100
O-ring seals	NBR 70 standard (-35° C to +110° C) VITON® optional	
Burst test pressure	130 bar	60 bar
Assembly time required	60% less than traditional piping systems 15% less than competitive modular piping systems	
Standard and certification	ASME B31.3 process piping 97/23/CE pressure equipment directive (P.E.D.)	
Application	Pipelines for compressed air, vacuum and inert gases (for example nitrogen or argon)	
Threads	BSP and NPT available	



ASME B31.3
Process Piping



Qualicoat
Certified



Lloyd's Register
Tests Certification



ISO 9001:2008
Certified



Ø 20-63 mm art. 3.3
Ø 80-158 mm Cat I
(Module A)



SimplAir® Easy Pipe Line Fittings

Description	Diameter (mm)							
	20	25	32	40	63	80	110	158
 Aluminium Pipe	✓	✓	✓	✓	✓	✓	✓	✓
 Union Connector	✓	✓	✓	✓	✓	✓	✓	✓
 Union Connector-Aluminum	✓	✓	✓	✓	✓			
 Male Connector	1/2" 3/4"	1/2" 3/4" 1"	1" 1 1/4"	1" 1 1/4" 1 1/2"	1 1/2" 2"			
 Male Connector-Aluminium	1/2"	3/4"	1"	1 1/4"	2"	3"	3"	3"
 Female Connector-Aluminium	1/2"	3/4"	1"	1 1/4"	2"			
 90° Elbow	✓	✓	✓	✓	✓	✓	✓	✓
 90° Reducing Elbow						40 63	40 63 80	110
 90° Male Thread Elbow						3"	3"	3"
 45° Elbow	✓	✓	✓	✓	✓			
 Male Wall Elbow-Brass	1/2" 3/4"	1/2" 3/4"						
 Female Wall Elbow-Brass	1/2"	1/2"						
 Cap	✓	✓	✓	✓	✓	✓	✓	✓
 Cap With Terminal						✓	✓	✓
 Reducer		20	25	32	40	40 63	40 63 80	110

Specifications

- Max operating pressure for 20 mm to 110 mm Pipe : 14 barg (203 psig)
- Max operating pressure for 158 mm pipe : 12 barg (174 psig)
- Standard operating temperature range:
-10°C (+14°F) to +60°C (+140°F)

Applications

- Fluid transportation for industrial plants, compressed air pipelines, vacuum, and other gases such as nitrogen and argon

Pipe Material

- Aluminium alloy according to EN AW-6060 extruded and calibrated, T6 Tempered, UV radiation treated

Thermal Treatment

- Drained "T6"

Finishing

- QUALICOAT RAL 5015 powder painting (flame-retardant)

Description	Diameter (mm)							
	20	25	32	40	63	80	110	158
 Tee	✓	✓	✓	✓	✓	✓	✓	✓
 Reducing Tee		20	25	32	40	40 63	40 63 80	110
 Male Thread Tee						3"	3"	3"
 Drop		20	20	20 25	20 25 32	20 25 32	20 25 32	20 25 32 40 63
 Male Drop		1/2"	1/2"	1/2" 3/4"	1/2" 3/4" 1"			
 Female Drop		1/2"	1/2"	1/2" 3/4"	1/2" 3/4" 1"	1/2" 3/4" 1"	1/2" 3/4" 1"	1/2" 3/4" 1" 1 1/4" 2"
 Valve-Brass	✓	✓	✓	✓	✓			
 Butterfly Valve						DN 80	DN 100	DN 150
 Pipe-Flange Fitting Adaptor						DN 80	DN 100	DN 150
 2 Port Point of Use Manifold Female	✓	✓	✓	✓	✓			
 3 Port Point of Use Manifold Female 3/4" BSP + 3 x 1/2" Female BSP								

Fittings Features

- Quick and easy connection
- Safe and reliable to use
- Full size air flow
- Interchangeability and reuse
- NPT and BSP connections available
- NBR O-ring seals (VITON on request)

These products are classified as auto-extinguished and completely recyclable, flame-proof and in accordance to all safety and health CE standards.



SimplAir[®] *EPL*
Easy Fit Piping System

